

Steel | Single Door | IP66 IK10

VE-303020

300H x 300W x 200D

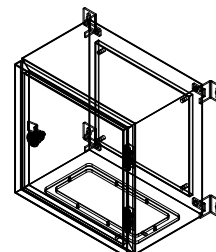
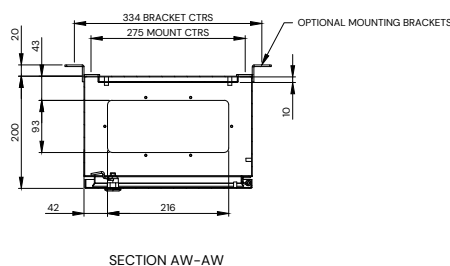
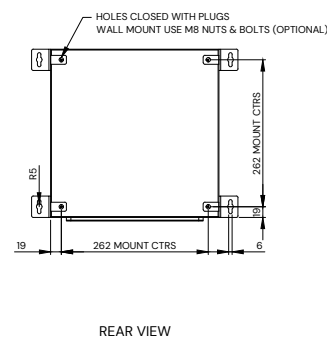
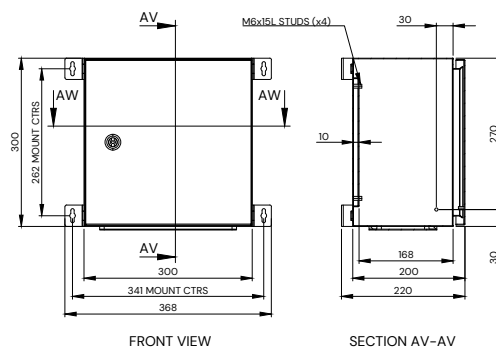
Versch Steel Wall-Mounted Electrical Enclosures deliver dependable protection for everyday electrical and control applications. Manufactured in powder-coated steel with a continuous formed polyurethane seal and secure locking, this series is engineered to achieve IP66 ingress protection, providing solid performance for general industrial control, HVAC interfaces, pumps and irrigation, lighting and signage, and small PLC/IO applications.

Protection Rating: IP66 IK10

Standards and Certifications: IEC/EN 60529, IEC/EN 62208

Materials:

Body:	1.2mm electro-galvanised steel
Door:	1.5mm electro-galvanised steel
Mounting Plate:	1.5mm electro-galvanised steel
Gland Plate:	1.5mm electro-galvanised steel
Seal:	Polyurethane
Surface Treatment:	Powder-coat 80-120micron
Colour:	RAL7035
Mass:	6 Kg.



Steel | Single Door | IP66 IK10

VE-403020

400H x 300W x 200D

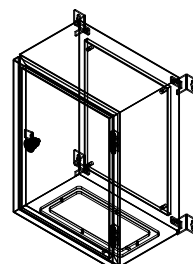
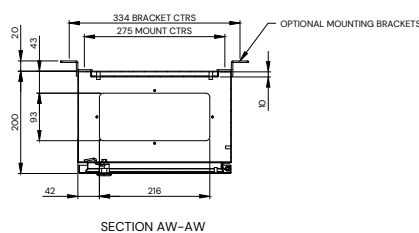
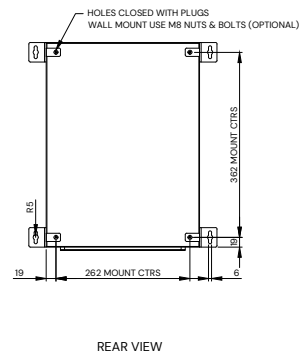
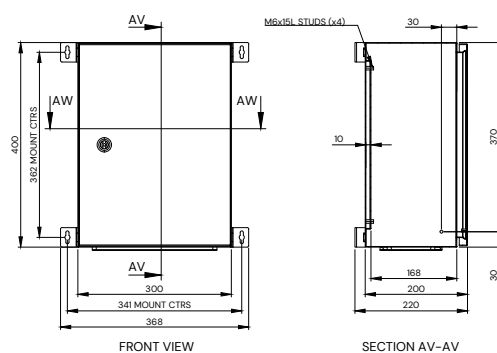
Versch Steel Wall-Mounted Electrical Enclosures deliver dependable protection for everyday electrical and control applications. Manufactured in powder-coated steel with a continuous formed polyurethane seal and secure locking, this series is engineered to achieve IP66 ingress protection, providing solid performance for general industrial control, HVAC interfaces, pumps and irrigation, lighting and signage, and small PLC/IO applications.

Protection Rating: IP66 IK10

Standards and Certifications: IEC/EN 60529, IEC/EN 62208

Materials:

Body:	1.2mm electro-galvanised steel
Door:	1.5mm electro-galvanised steel
Mounting Plate:	1.5mm electro-galvanised steel
Gland Plate:	1.5mm electro-galvanised steel
Seal:	Polyurethane
Surface Treatment:	Powder-coat 80-120micron
Colour:	RAL7035
Mass:	7 Kg.



Steel | Single Door | IP66 IK10

VE-404020

400H x 400W x 200D

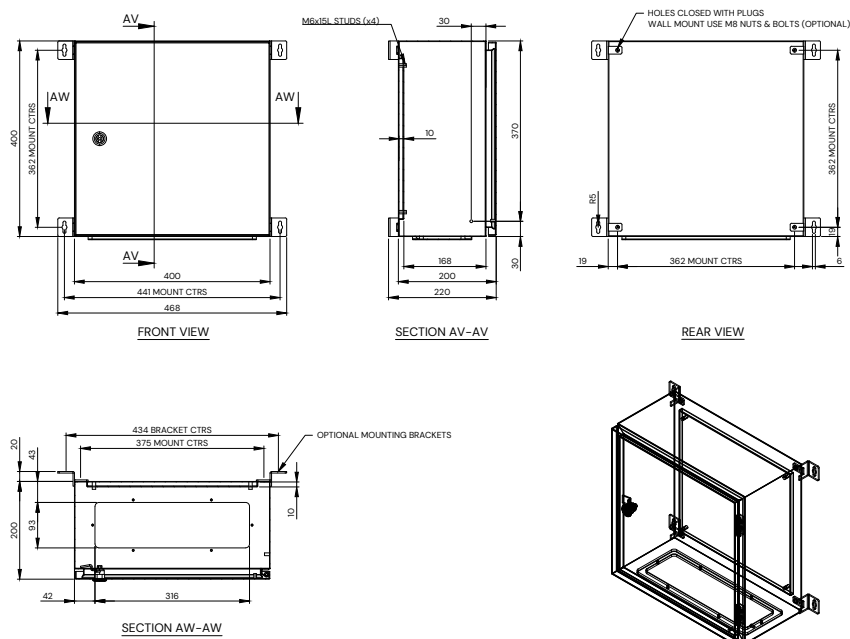
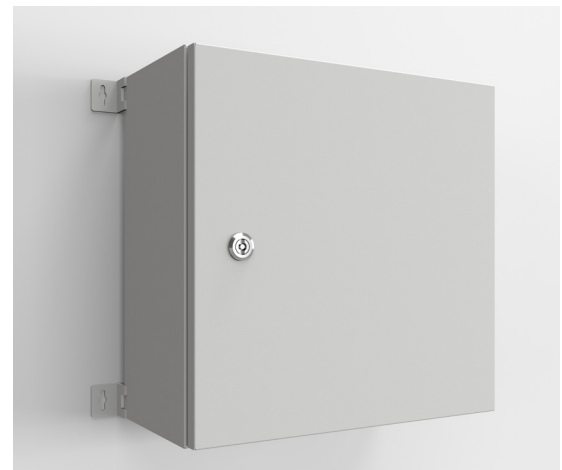
Versch Steel Wall-Mounted Electrical Enclosures deliver dependable protection for everyday electrical and control applications. Manufactured in powder-coated steel with a continuous formed polyurethane seal and secure locking, this series is engineered to achieve IP66 ingress protection, providing solid performance for general industrial control, HVAC interfaces, pumps and irrigation, lighting and signage, and small PLC/IO applications.

Protection Rating: IP66 IK10

Standards and Certifications: IEC/EN 60529, IEC/EN 62208

Materials:

Body:	1.2mm electro-galvanised steel
Door:	1.5mm electro-galvanised steel
Mounting Plate:	1.5mm electro-galvanised steel
Gland Plate:	1.5mm electro-galvanised steel
Seal:	Polyurethane
Surface Treatment:	Powder-coat 80-120micron
Colour:	RAL7035
Mass:	9 Kg.



Steel | Single Door | IP66 IK10

VE-504020

500H x 400W x 200D

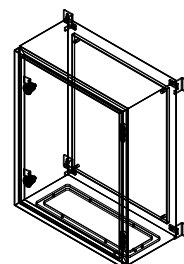
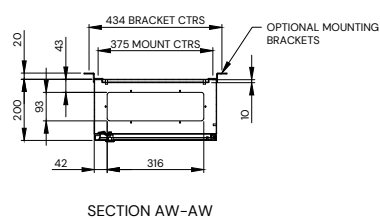
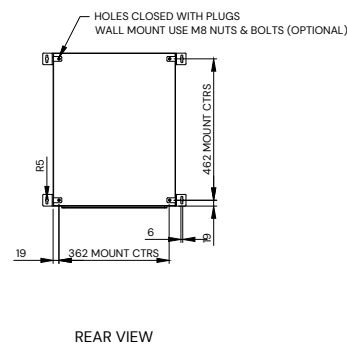
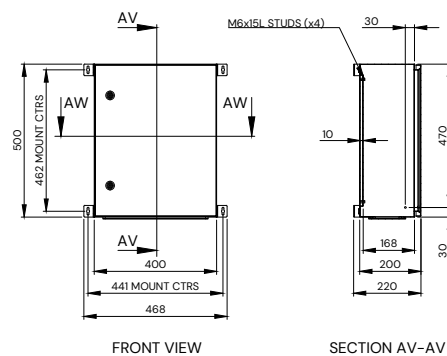
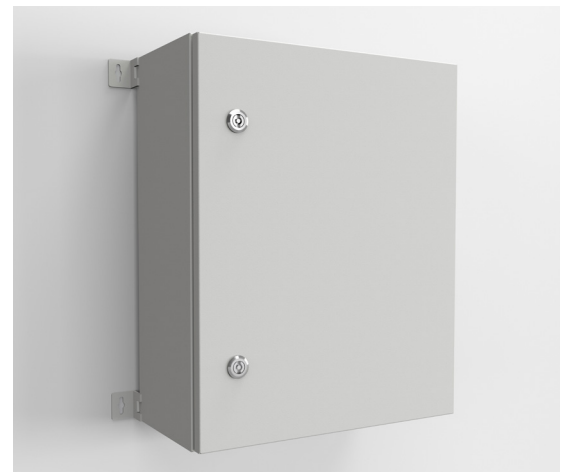
Versch Steel Wall-Mounted Electrical Enclosures deliver dependable protection for everyday electrical and control applications. Manufactured in powder-coated steel with a continuous formed polyurethane seal and secure locking, this series is engineered to achieve IP66 ingress protection, providing solid performance for general industrial control, HVAC interfaces, pumps and irrigation, lighting and signage, and small PLC/IO applications.

Protection Rating: IP66 IK10

Standards and Certifications: IEC/EN 60529, IEC/EN 62208

Materials:

Body:	1.2mm electro-galvanised steel
Door:	1.5mm electro-galvanised steel
Mounting Plate:	1.5mm electro-galvanised steel
Gland Plate:	1.5mm electro-galvanised steel
Seal:	Polyurethane
Surface Treatment:	Powder-coat 80-120micron
Colour:	RAL7035
Mass:	11 Kg.



Steel | Single Door | IP66 IK10

VE-604025

600H x 400W x 250D

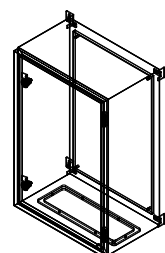
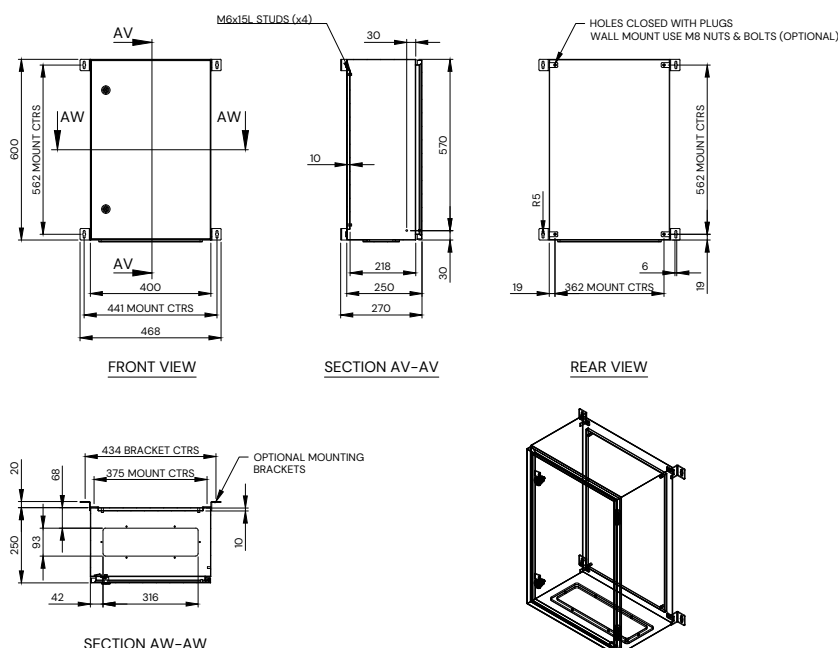
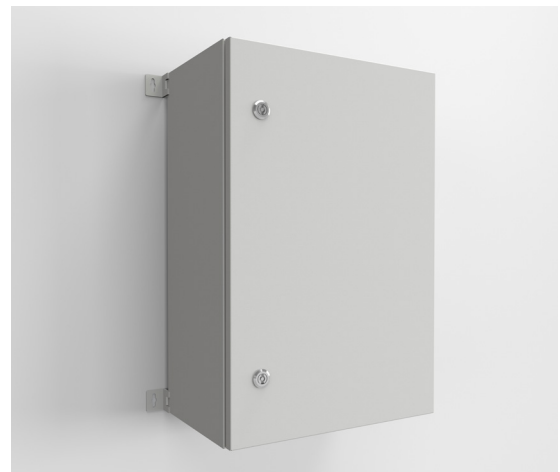
Versch Steel Wall-Mounted Electrical Enclosures deliver dependable protection for everyday electrical and control applications. Manufactured in powder-coated steel with a continuous formed polyurethane seal and secure locking, this series is engineered to achieve IP66 ingress protection, providing solid performance for general industrial control, HVAC interfaces, pumps and irrigation, lighting and signage, and small PLC/IO applications.

Protection Rating: IP66 IK10

Standards and Certifications: IEC/EN 60529, IEC/EN 62208

Materials:

Body:	1.2mm electro-galvanised steel
Door:	1.5mm electro-galvanised steel
Mounting Plate:	1.5mm electro-galvanised steel
Gland Plate:	1.5mm electro-galvanised steel
Seal:	Polyurethane
Surface Treatment:	Powder-coat 80-120micron
Colour:	RAL7035
Mass:	13 Kg.



Steel | Single Door | IP66 IK10

VE-606030

600H x 600W x 300D

Versch Steel Wall-Mounted Electrical Enclosures deliver dependable protection for everyday electrical and control applications. Manufactured in powder-coated steel with a continuous formed polyurethane seal and secure locking, this series is engineered to achieve IP66 ingress protection, providing solid performance for general industrial control, HVAC interfaces, pumps and irrigation, lighting and signage, and small PLC/IO applications.

Protection Rating: IP66 IK10

Standards and Certifications: IEC/EN 60529, IEC/EN 62208

Materials:

Body:	1.2mm electro-galvanised steel
Door:	1.5mm electro-galvanised steel
Mounting Plate:	1.5mm electro-galvanised steel
Gland Plate:	1.5mm electro-galvanised steel
Seal:	Polyurethane
Surface Treatment:	Powder-coat 80-120micron
Colour:	RAL7035
Mass:	19 Kg.

