






Output DC -V -V +V +V

Mounting	TS-35 DIN RAIL
Protection	Short Circuit Overload Overvoltage Overtemperature
ENCLOSURE	
Material	Powder Coated Cold Rolled Steel
Lock	Single-Point Cam Lock  
Mounting	External Brackets 



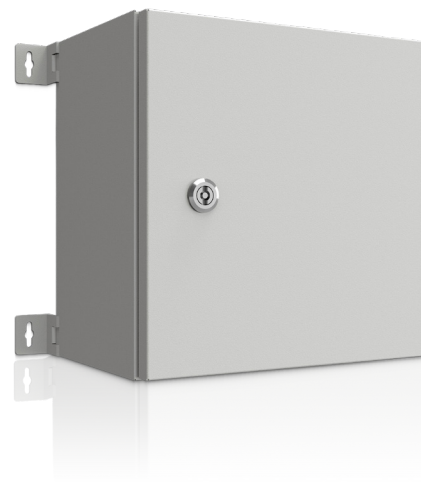
ELECTRICAL ENCLOSURES

Economy Essentials. Built to Standard.

STEEL | SINGLE DOOR | IP66 IK10

GALVANISED STEEL

Versch Steel Wall-Mounted Electrical Enclosures (RAL 7035 GREY) deliver dependable protection for everyday electrical and control applications. Manufactured in powder-coated steel with a continuous formed polyurethane seal and secure locking, this series is engineered to achieve IP66 ingress protection, providing solid performance for general industrial control, HVAC interfaces, pumps and irrigation, lighting and signage, and small PLC/IO applications.



Protection Rating: IP66 IK10

Standards and Certifications: IEC/EN 60529, IEC/EN 62208

Materials:

Body: 1.2mm electro-galvanised steel
Door: 1.5mm electro-galvanised steel
Mounting Plate: 1.5mm electro-galvanised steel
Gland Plate: 1.5mm electro-galvanised steel
Seal: Polyurethane
Surface Treatment: Powder-coat 80-120micron
Colour: RAL7035

Part Number	Height	Width	Depth	Mass
VE-303020	300	300	200	6 kg
VE-403020	400	300	200	7 kg
VE-404020	400	400	200	9 kg
VE-504020	500	400	200	11 kg
VE-604025	600	400	250	13 kg
VE-606030	600	600	300	19 kg

STAINLESS STEEL | SINGLE DOOR | IP66 IK10

304 / 316 STAINLESS STEEL

Versch 304 & 316 Stainless Steel Wall-Mounted Electrical Enclosures deliver dependable protection for everyday electrical and control applications. Manufactured in 304 & 316L stainless steel with a continuous formed polyurethane seal and secure locking, this series is engineered to achieve IP66 ingress protection, providing solid performance for general industrial control, HVAC interfaces, pumps and irrigation, lighting and signage, and small PLC/IO applications.



Protection Rating: IP66 IK10

Standards and Certifications: IEC/EN 60529, IEC/EN 62208

Materials:

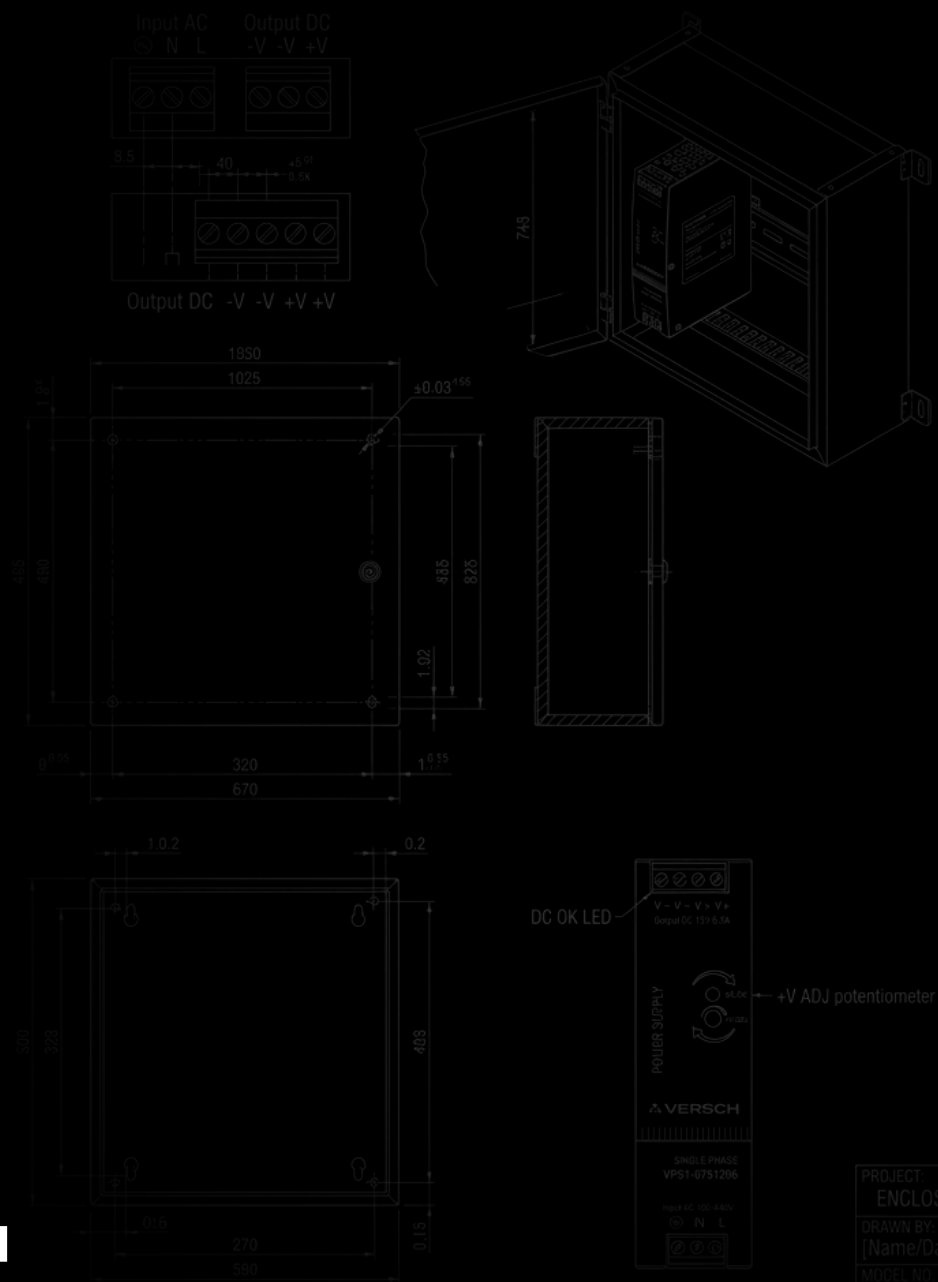
Body:	1.5mm grade 304L / 316L stainless steel
Door:	1.5mm grade 304L / 316L stainless steel
Mounting Plate:	1.5mm electro-galvanised steel
Gland Plate:	1.5mm grade 304L / 316L stainless steel
Seal:	Polyurethane
Surface Treatment:	4B finishing which equals to 0.4 to 0.8 μm

304 Stainless Steel

Part Number	Height	Width	Depth	Mass
VE-304-302015	300	200	150	4 kg
VE-304-404020	400	400	200	10 kg
VE-304-504025	500	400	250	13 kg
VE-304-604020	600	400	200	14 kg
VE-304-606030	600	600	300	22 kg

316 Stainless Steel

Part Number	Height	Width	Depth	Mass
VE-316-303015	300	300	150	6 kg
VE-316-403020	400	300	200	8 kg
VE-316-404020	400	400	200	10 kg
VE-316-504025	500	400	250	13 kg
VE-316-606030	600	600	300	22 kg



SPECIFICATIONS	
POWER SUPPLY (V)	
Input	AC
Output	DC
Cooling	Nat
Mounting	TS
Protection	Sh Ov Ov Ov
ENCLOSURE	
Material	Pol Ste
Lock	Sim
Mounting	Ext
Ingress Protection	



**YOUR POWER.
BUILT TO STANDARD.**

sales@versch.com.au

www.versch.com.au

PROJECT:	ENCLOSED POWER SUPPLY
DRAWN BY:	[Name/Date]
MODEL NO.	VPS1-ENCL-075